



Virginia Index Crime and Drug Arrest Trends 2011–2020

Virginia Department of Criminal Justice Services
Criminal Justice Research Center

February 2022

Executive Summary

This report describes Virginia violent and property index crime and drug arrest trends for the decade 2011–2020. Understanding these trends is important because the numbers of crimes and arrests reported are “leading indicators” for other parts of the criminal justice system, including prosecutions, court caseloads, and correctional populations. They also provide public safety officials with information to guide policies, legislation and resources aimed at preventing and reducing future crime.

Data in this report is drawn from crimes and arrests reported by Virginia law enforcement agencies to the Virginia State Police Uniform Crime Reports (UCR) data repository. The index offenses, considered the most serious crimes, are the violent crimes of murder/non-negligent manslaughter, forcible rape, robbery, and aggravated assault, and the property crimes of burglary, larceny, and motor vehicle theft (see Appendix for more details on the data source and offense definitions).

Crime and arrest trends are presented across time and geography. For historical context, 30-year crime trends are shown, although primary attention is given to trends over the last decade. This context is important, because single year-to-year variations in crime can be too volatile to inform statewide policies and legislation. Geography is important because crime trends are not the same everywhere in Virginia. Therefore, trends are presented at three geographic levels: statewide, by the seven Virginia State Police divisions, and by locality.

The major findings of the report follow.

Violent Index Crime Trends

The volume of violent index crime in Virginia increased over the last decade. The *number* of violent crimes rose by 8% from 2011 to 2020, and the *rate* of violent crimes (per 100,000 population) increased by 1%.

- Murder and aggravated assault were the violent index crimes that increased in both number and rate from 2011 to 2020. Forcible rape and robbery decreased in both number and rate from 2011 to 2020.
- The number of murders increased from 306 in 2011 to 528 in 2020, a 73% increase. The murder rate increased by 63% during this time.
- The number of forcible rapes decreased, from 1,537 in 2011 to 1,506 in 2020, a 2% decrease. The rate of forcible rapes decreased by 8%.
- The number of robberies dropped significantly, from 5,427 in 2011 to 2,946 in 2020, a 46% decrease. The robbery rate dropped by 49%.
- The number of aggravated assaults increased from 8,702 in 2011 to 12,194 in 2020, a 40% increase. The aggravated assault *rate* increased by 32%.

The increase in the total number of violent crimes occurred during a decade when Virginia’s population increased by 6%, from over 8.1 million in 2011 to over 8.6 million in 2020.

More recent trends in violence were mixed. The total violent index crime rate decreased continuously from 2012 through 2013, remained essentially unchanged in 2014 and 2015, increased in 2016, decreased in 2017 and again in 2018, then increased in 2019 and 2020.

From 2019 to 2020 the total violent index crime rate increased by 2%, from 195.8 violent crimes per 100,000 population in 2019 to 200.0 in 2020. The same mixed trend continued for the individual types of violent crime.

- The number of murders increased from 428 in 2019 to 528 in 2020, a 23% increase. The murder rate increased by 23%.
- The number of forcible rapes decreased from 1,758 in 2019 to 1,506 in 2020, a 14% decrease. The forcible rape rate decreased by 15%.
- The number of robberies decreased from 3,526 in 2019 to 2,946 in 2020, a 16% decrease. The robbery rate decreased by 17%.
- The number of aggravated assaults increased from 11,004 victims in 2019 to 12,194 in 2020, an 11% increase. The aggravated assault rate increased by 10%.

Property Index Crime Trends

Overall property crime in Virginia dropped over the past decade. The total *number* of property crimes decreased by 31% from 2011 to 2020, and the *rate* of property crimes (per 100,000 population) decreased by 35%.

- The number of burglaries declined from 30,157 in 2011 to 11,188 in 2020, a 63% decrease. The burglary rate decreased significantly by 65%.
- The number of larcenies dropped from 142,244 in 2011 to 103,570 in 2020, a 27% decrease. The larceny rate decreased by 31%.
- Motor vehicle theft was the only type of property crime that increased in number and rate from 2011 to 2020. The number of motor vehicle thefts increased from 8,707 in 2011 to 9,734 in 2020, a 12% increase. The motor vehicle theft rate increased by 6%.

More recent trends in property crime show that from 2019 to 2020, both the number and rate of property crimes overall decreased by 11%.

- The number of burglaries declined from 13,749 in 2019 to 11,188 in 2020, a 19% decrease. The burglary rate also decreased by 19%.
- The number of larcenies decreased from 116,709 in 2019 to 103,570 in 2020, an 11% decrease. The larceny rate decreased by 12%.
- The number of motor vehicle thefts increased from 9,034 in 2019 to 9,734 in 2020, an 8% increase, and the motor vehicle theft rate increased by 7%.

Drug Arrest Trends

Due to the covert nature of drug use and distribution, there is no direct measure of drug offenses in Virginia during the last decade. Instead, the criminal justice system’s primary measure of drug offending is the number of arrests reported for illegal drug sales and possession.

The total *number* of arrests for drug sale and possession decreased by 24% from 2011 to 2020, and the *rate* of drug arrests (per 100,000 arrest-age population) decreased by 29%. The total number of drug arrests and arrests for each type of drug decreased from 2019 to 2020.

- Marijuana arrests accounted for over 60% of all drug arrests from 2011 to 2019, and half of all drug arrests in 2020. From 2011 to 2020, the number of marijuana arrests decreased by 38%, from 22,461 in 2011 to 13,899 in 2020. From 2019 to 2020, the number of marijuana arrests decreased by 47%, from 26,089 in 2019 to 13,899 in 2020.
- In 2011, there were 5,083 arrests where a stimulant was the primary drug seized, and in 2020 the number had risen to 6,937 arrests, a 36% increase. Arrests for all stimulants had the largest percentage increase in number from 2011 to 2020. This increase was the result of increases in the number of arrests for methamphetamine/amphetamines/other stimulants which increased from 743 in 2011 to 3,651 in 2020, a 391% increase. At the same time, arrests for cocaine decreased by 12% and arrests for crack decreased by 38%. From 2019 to 2020, arrests for each type of stimulant decreased, and total arrests for all types of stimulants decreased by 18%.
- Arrests for heroin and other opioids, while increasing over the last decade, have more recently decreased. From 2011 to 2020 the number of arrests for all opioids (including heroin and fentanyl) increased by 2%, from 2,938 arrests in 2011 to 2,994 in 2020. The increasing trend in arrests for all opioids leveled off after 2015. While the number of arrests for heroin increased by 97% over the decade, from 926 in 2011 to 1,823 in 2020, the number of arrests for heroin decreased by 20% from 2019 to 2020. The number of arrests for other narcotics (including fentanyl) decreased by 17% from 2019 to 2020.
- Arrests for barbiturates, hallucinogens and all other drugs decreased by 30% from 2011 (1,447 arrests) to 2020 (1,008 arrests), and decreased by 21% from 2019 to 2020.
- Adults were consistently arrested for drug violations at a higher rate than juveniles. Drug arrest rates declined for both juveniles and adults. The adult drug arrest rate decreased by 26% over the decade, and juvenile drug arrest rates declined by 65%. From 2019 to 2020, drug arrest rates decreased for both juveniles and adults.

Violent Index Crime

Violent crimes are murder/non-negligent manslaughter, forcible rape, robbery, and aggravated assault.¹ The total number of violent crimes reported increased by 8% over the decade while the total state population increased by 6% over the ten-year period.

Change in number and rate of violent index crime in Virginia, 2011–2020

Year	Number of violent crimes					Violent crime rate per 100,000 population				
	Murder*	Forcible Rape	Robbery	Aggravated Assault	Total	Murder*	Forcible Rape	Robbery	Aggravated Assault	Total
2011	306	1,537	5,427	8,702	15,972	3.78	19.0	67.0	107.4	197.1
2012	316	1,449	4,708	9,077	15,550	3.9	17.7	57.5	110.9	190.0
2013	317	1,431	4,547	9,019	15,314	3.84	17.3	55.0	109.2	185.4
2014	337	1,453	4,283	9,379	15,452	4.0	17.5	51.4	112.6	185.6
2015	383	1,499	4,438	9,223	15,543	4.6	17.9	52.9	110.0	185.4
2016	480	1,707	4,778	10,240	17,205	5.7	20.3	56.8	121.7	204.5
2017	454	1,816	4,349	10,014	16,633	5.4	21.4	51.3	118.2	196.4
2018	391	1,828	3,619	10,102	15,940	4.6	21.5	42.5	118.6	187.1
2019	428	1,758	3,526	11,004	16,716	5.0	20.6	41.3	128.9	195.8
2020	528	1,506	2,946	12,194	17,174	6.1	17.5	34.3	142.0	200.0
10-yr % change	+73%	-2%	-46%	+40%	+8%	+63%	-8%	-49%	+32%	+1%
1-yr % change	+23%	-14%	-16%	+11%	+3%	+23%	-15%	-17%	+10%	+2%

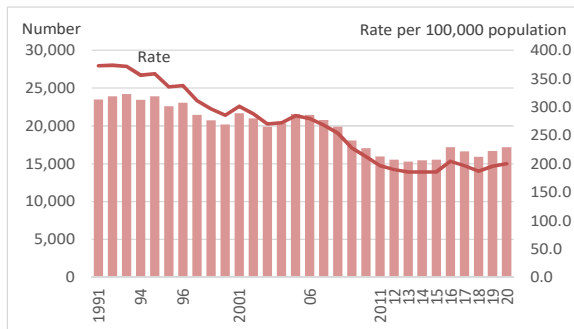
1-yr = 2019 to 2020

*Includes non-negligent manslaughter

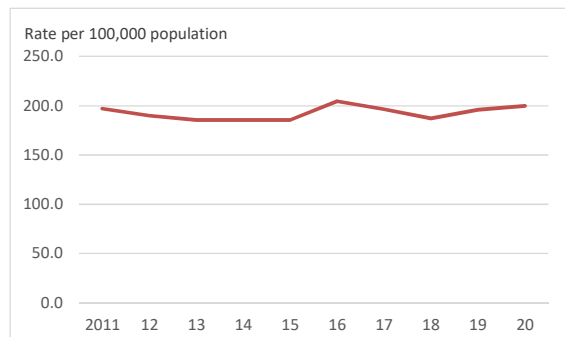
More recently, the number of violent crimes across Virginia have continued to increase. From 2019 to 2020, the overall total number of violent crimes reported increased by 3%. The number of murder victims and aggravated assault victims both increased from 2019 to 2020, while the number of victims of forcible rape and the number of robbery offenses decreased.

Number and rate of total violent index crime

1991–2020 (30 years)



2011–2020 (most recent 10 years)



¹ Murder, forcible rape, and aggravated assault crimes are the actual number of victims reported. Robberies are the number of crimes reported.

The statewide total violent crime *rate*² increased by 1% from 2011 to 2020, from a rate of 197.1 violent crimes per 100,000 population in 2011 to 200.0 in 2020. The total violent crime rate trend was mixed over the decade, ranging between 185.4 and 204.5 violent crimes per 100,000 population.

Murder/Non-Negligent Manslaughter

The murder rate across Virginia increased significantly over the decade, from 3.8 homicide victims per 100,000 total population in 2011 to 6.1 homicide victims per 100,000 population in 2020, a 63% increase. The 10-year murder rate trend was mixed. More recently, the murder rate increased continuously from 2018 on, with 4.6 victims per 100,000 population in 2018 to 5.0 victims per 100,000 population in 2019, then 6.1 victims per 100,000 in 2020. The last time the Virginia murder rate was similar to the 2020 rate was in 2005 when the statewide murder rate was 6.4 victims per 100,000 population.

Forcible Rape

From 2011 to 2020, the rate of violent sexual assault in Virginia decreased by 8%, from 19.0 victims per 100,000 population reported in 2011 to 17.5 reported in 2020. The victimization rate decreased by 15% from 2019 to 2020.

Robbery

Robbery was the only violent index offense that decreased in both number and rate per 100,000 population from 2011 to 2020. Over the decade, the statewide robbery rate decreased by almost half, from 67.0 robberies per 100,000 population in 2011 to 34.3 in 2020, a 49% decrease. From 2019 to 2020, the robbery rate decreased by 17%, with 41.3 robberies per 100,000 population reported in 2019, to 34.3 in 2020.

Aggravated Assault

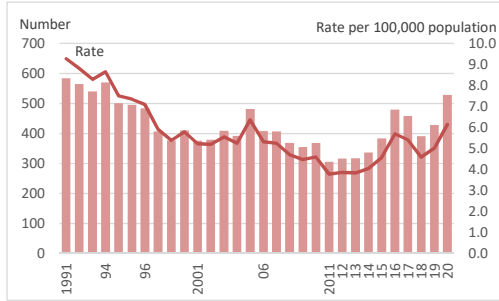
In 2011, five out of every 10 violent index crimes was an aggravated assault. In 2020, aggravated assaults were seven out of every 10 violent index crimes. Over the decade, the aggravated assault victimization rate across Virginia increased by 32% from 107.4 victims per 100,000 population in 2011 to 142.0 in 2020. From 2019 to 2020, the aggravated assault victimization rate increased by 10%, from 128.9 in 2019 to 142.0 in 2020.

² The violent crime rate is the number of crimes reported per 100,000 population.

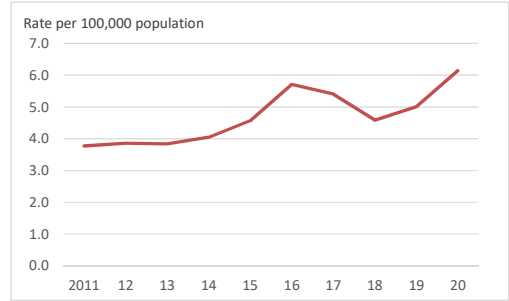
Number and rate of violent index crime by crime type

Murder/Non-Negligent Manslaughter

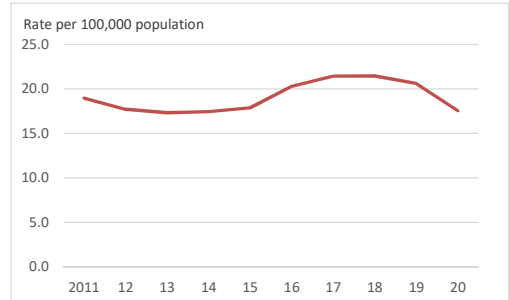
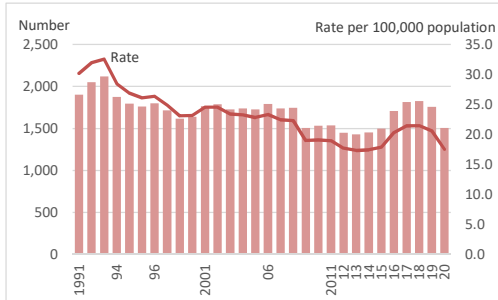
1991–2020 (30 years)



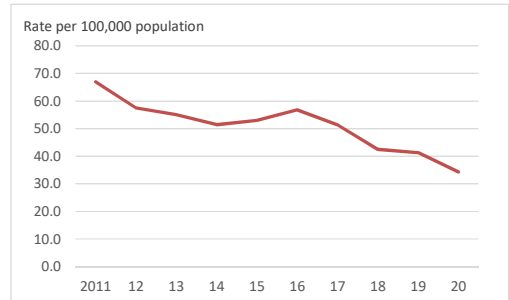
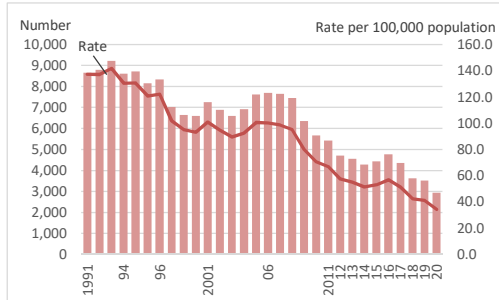
2011–2020 (most recent 10 years)



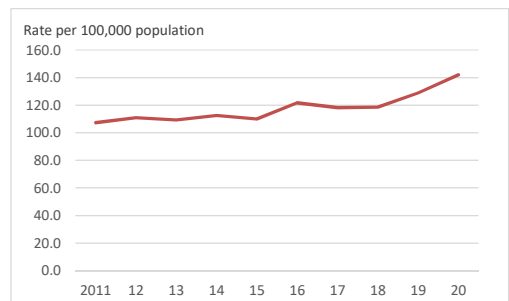
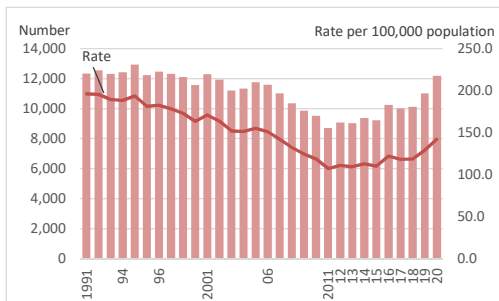
Forcible Rape



Robbery



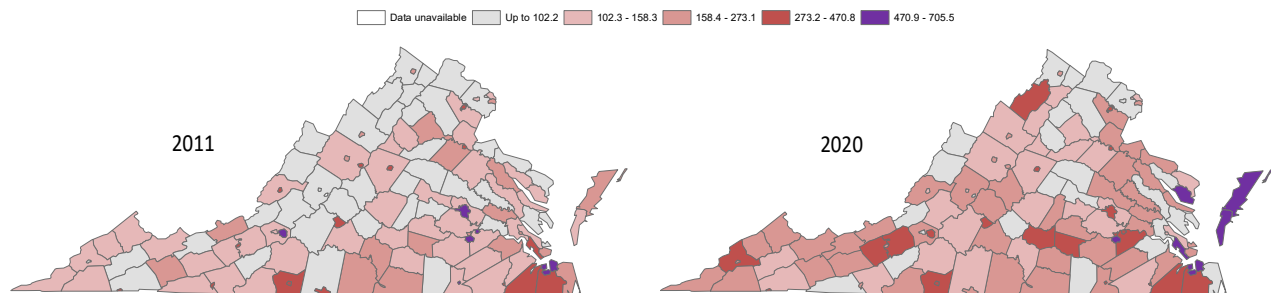
Aggravated Assault



Violent Index Crime Rates by Area

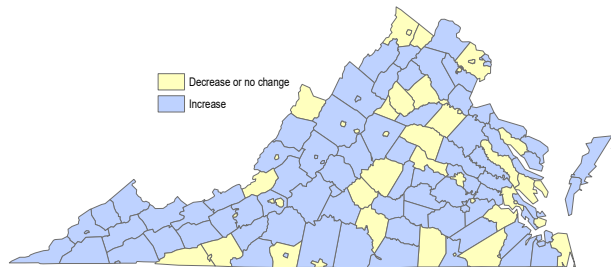
2011 locality violent crime rates ranged from a low rate of 39.9 violent crimes per 100,000 population to a high rate of 705.5. By comparison, 2020 locality violent crime rates ranged from a low locality rate of 13.2 violent crimes per 100,000 population to a locality high rate of 911.7. In 2011, the 20 localities with the highest violent index crime rates were all cities. In 2020, 15 cities and 5 counties were the 20 localities with the highest violent crime rates. The change in locality violent crime rates is shown in the maps below, where many localities with lighter shading (indicating lower rates) in the 2011 map are shaded noticeably darker in the 2020 map.

Total violent index crime rate per 100,000 population, by locality and year



While the maps above show locality violent index crime rates in 2020 relative to rates in 2011, a locality with no change in shading could still have an increase or decrease in violent crime rate.

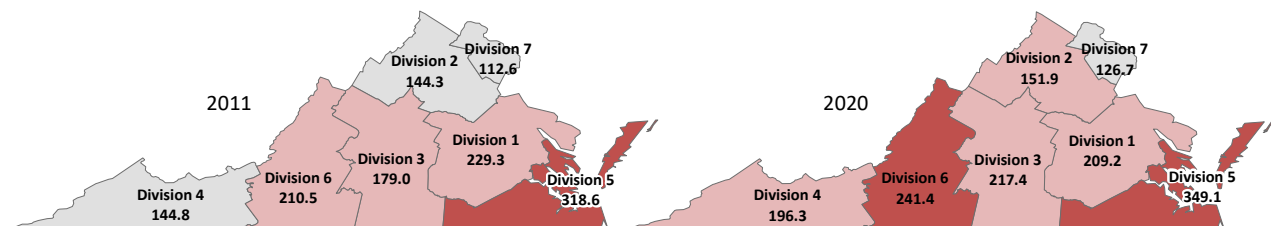
Change in violent index crime rate by locality, 2011 to 2020



Total violent crime rates decreased in 20 of Virginia’s 38 cities and in 25 of Virginia’s 95 counties over the ten-year period.

Violent index crime rates decreased in Virginia State Police Division 1 from 2011 to 2020, and increased in all other divisions.

Total violent index crime rate by State Police division and year, 2011 and 2020



Total violent crime rate per 100,000 population by locality

Note: 2011 crime and arrest data was unavailable for the city of Buena Vista.

	2011	2020
VIRGINIA	197.0	199.9

COUNTIES	2011	2020
Accomack Co	192.0	528.7
Albemarle Co	108.1	119.0
Alleghany Co	140.9	256.8
Amelia Co	133.4	176.7
Amherst Co	90.3	189.9
Appomattox Co	86.6	71.2
Arlington Co	150.3	150.3
Augusta Co	116.6	150.8
Bath Co	64.1	97.1
Bedford Co	69.2	127.1
Bland Co	73.5	160.3
Botetourt Co	72.7	126.3
Brunswick Co	93.3	82.5
Buchanan Co	138.2	162.2
Buckingham Co	151.4	125.5
Campbell Co	106.9	208.8
Caroline Co	129.1	183.2
Carroll Co	136.5	113.2
Charles City Co	69.0	161.3
Charlotte Co	167.8	142.4
Chesterfield Co	120.8	128.7
Clarke Co	91.4	83.1
Craig Co	95.4	40.6
Culpeper Co	207.1	148.5
Cumberland Co	90.1	223.2
Dickenson Co	114.1	182.3
Dinwiddie Co	153.2	262.4
Essex Co	223.0	257.5
Fairfax Co	89.6	85.2
Fauquier Co	87.8	92.6
Floyd Co	71.4	91.3
Fluvanna Co	50.0	80.3
Franklin Co	113.5	144.5
Frederick Co	100.5	83.3
Giles Co	175.3	206.2
Gloucester Co	97.6	77.4
Goochland Co	149.0	94.1
Grayson Co	130.1	92.9
Greene Co	144.8	106.4
Greensville Co	132.2	175.2
Halifax Co	188.8	210.9
Hanover Co	73.9	178.4
Henrico Co	138.8	154.6
Henry Co	315.3	284.2
Highland Co	88.0	48.4
Isle of Wight Co	144.6	243.3
James City Co	119.3	88.9
King & Queen Co	142.2	100.8

COUNTIES	2011	2020
King George Co	94.8	204.5
King William Co	68.8	181.4
Lancaster Co	114.4	514.9
Lee Co	132.6	170.7
Loudoun Co	91.3	99.6
Louisa Co	95.8	92.1
Lunenburg Co	116.5	190.7
Madison Co	113.8	68.8
Mathews Co	67.0	57.0
Mecklenburg Co	180.9	260.2
Middlesex Co	110.9	178.0
Montgomery Co	105.6	426.1
Nelson Co	39.9	203.3
New Kent Co	165.6	169.1
Northampton Co	152.6	479.3
Northumberland Co	72.6	116.6
Nottoway Co	194.7	428.2
Orange Co	73.7	139.2
Page Co	70.8	132.7
Patrick Co	119.7	271.1
Pittsylvania Co	80.7	146.3
Powhatan Co	71.2	126.0
Prince Edward Co	142.1	281.0
Prince George Co	111.9	302.4
Prince William Co	128.8	198.2
Pulaski Co	158.3	286.3
Rappahannock Co	80.2	84.1
Richmond Co	108.9	13.2
Roanoke Co	149.5	266.3
Rockbridge Co	102.2	216.2
Rockingham Co	66.1	131.5
Russell Co	87.2	146.9
Scott Co	117.7	208.6
Shenandoah Co	101.7	287.0
Smyth Co	237.6	241.4
Southampton Co	107.9	106.6
Spotsylvania Co	216.8	104.0
Stafford Co	129.4	183.1
Surry Co	201.8	71.6
Sussex Co	140.5	252.4
Tazewell Co	116.3	223.7
Warren Co	100.8	151.5
Washington Co	93.2	142.6
Westmoreland Co	96.5	262.2
Wise Co	145.1	308.9
Wythe Co	126.6	171.0
York Co	113.5	119.9

CITIES	2011	2020
Alexandria C	175.3	189.6
Bristol C	320.5	340.5
Buena Vista C	n/a	46.9
Charlottesville C	421.7	387.6
Chesapeake C	396.6	409.3
Colonial Heights C	195.9	337.1
Covington C	375.6	141.9
Danville C	388.3	258.3
Emporia C	693.2	380.4
Fairfax C	158.2	81.1
Falls Church C	78.5	136.7
Franklin C	449.7	280.9
Fredericksburg C	416.9	393.3
Galax C	450.8	190.6
Hampton C	273.1	267.2
Harrisonburg C	201.1	212.4
Hopewell C	621.7	366.5
Lexington C	72.4	151.1
Lynchburg C	365.8	447.5
Manassas C	328.3	305.9
Manassas Park C	64.4	144.4
Martinsville C	326.3	404.7
Newport News C	470.8	613.2
Norfolk C	591.9	641.3
Norton C	49.6	200.8
Petersburg C	512.7	660.2
Poquoson C	66.4	212.1
Portsmouth C	586.3	911.7
Radford C	369.0	262.9
Richmond C	705.5	362.6
Roanoke C	608.9	449.2
Salem C	116.8	47.4
Staunton C	195.2	174.7
Suffolk C	305.6	385.5
Virginia Beach C	175.7	97.5
Waynesboro C	350.9	233.1
Williamsburg C	196.6	118.0
Winchester C	241.3	216.6

County and city ranking of total violent crime rate per 100,000 population, by year

Note: 2011 crime and arrest data was unavailable for the city of Buena Vista.

Counties are ranked against other counties (highest rate ranked 1, lowest rate ranked 95)

Cities are ranked against other cities (highest rate ranked 1, lowest rate ranked 37 [2011] or 38 [2020])

COUNTIES	2011	2020	COUNTIES	2011	2020	CITIES	2011	2020
Accomack Co	8	1	King George Co	66	29	Alexandria C	30	28
Albemarle Co	54	67	King William Co	90	37	Bristol C	21	15
Alleghany Co	26	18	Lancaster Co	46	2	Buena Vista C	n/a	38
Amelia Co	31	40	Lee Co	32	43	Charlottesville C	11	10
Amherst Co	71	33	Loudoun Co	70	74	Chesapeake C	13	7
Appomattox Co	77	90	Louisa Co	64	79	Colonial Heights C	27	16
Arlington Co	18	51	Lunenburg Co	44	32	Covington C	15	32
Augusta Co	43	50	Madison Co	48	91	Danville C	14	21
Bath Co	93	75	Mathews Co	91	92	Emporia C	2	12
Bedford Co	88	62	Mecklenburg Co	10	16	Fairfax C	31	36
Bland Co	82	47	Middlesex Co	52	39	Falls Church C	33	33
Botetourt Co	83	63	Montgomery Co	57	5	Franklin C	10	18
Brunswick Co	67	86	Nelson Co	95	30	Fredericksburg C	12	9
Buchanan Co	29	45	New Kent Co	13	44	Galax C	9	27
Buckingham Co	17	65	Northampton Co	16	3	Hampton C	23	19
Campbell Co	56	26	Northumberland Co	84	68	Harrisonburg C	25	24
Caroline Co	36	34	Nottoway Co	7	4	Hopewell C	3	13
Carroll Co	30	69	Orange Co	81	58	Lexington C	34	30
Charles City Co	89	46	Page Co	87	59	Lynchburg C	17	6
Charlotte Co	12	57	Patrick Co	40	12	Manassas C	19	17
Chesterfield Co	39	61	Pittsylvania Co	78	54	Manassas Park C	36	31
Clarke Co	69	85	Powhatan Co	86	64	Martinsville C	20	8
Craig Co	65	94	Prince Edward Co	25	11	Newport News C	8	4
Culpeper Co	5	52	Prince George Co	51	7	Norfolk C	5	3
Cumberland Co	72	23	Prince William Co	37	31	Norton C	37	26
Dickenson Co	47	36	Pulaski Co	14	9	Petersburg C	7	2
Dinwiddie Co	15	14	Rappahannock Co	79	83	Poquoson C	35	25
Essex Co	3	17	Richmond Co	53	95	Portsmouth C	6	1
Fairfax Co	73	82	Roanoke Co	19	13	Radford C	16	20
Fauquier Co	75	78	Rockbridge Co	58	24	Richmond C	1	14
Floyd Co	85	80	Rockingham Co	92	60	Roanoke C	4	5
Fluvanna Co	94	87	Russell Co	76	53	Salem C	32	37
Franklin Co	49	55	Scott Co	42	27	Staunton C	28	29
Frederick Co	61	84	Shenandoah Co	59	8	Suffolk C	22	11
Giles Co	11	28	Smyth Co	2	21	Virginia Beach C	29	35
Gloucester Co	62	88	Southampton Co	55	70	Waynesboro C	18	22
Goochland Co	20	76	Spotsylvania Co	4	72	Williamsburg C	26	34
Grayson Co	34	77	Stafford Co	35	35	Winchester C	24	23
Greene Co	22	71	Surry Co	6	89			
Greensville Co	33	41	Sussex Co	27	19			
Halifax Co	9	25	Tazewell Co	45	22			
Hanover Co	80	38	Warren Co	60	49			
Henrico Co	28	48	Washington Co	68	56			
Henry Co	1	10	Westmoreland Co	63	15			
Highland Co	74	93	Wise Co	21	6			
Isle of Wight Co	23	20	Wythe Co	38	42			
James City Co	41	81	York Co	49	66			
King & Queen Co	24	73						

Property Index Crime

Property crimes are burglary, larceny, and motor vehicle theft. There were over 56,000 fewer property crimes reported in Virginia in 2020 than in 2011, a 31% decrease in the number of offenses.

Change in number and rate of property index crime in Virginia, 2011–2020

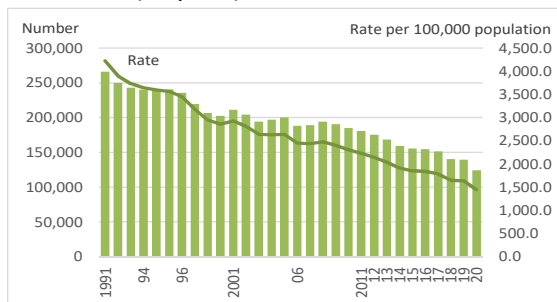
Year	Number of property crimes				Property crime rate per 100,000 population			
	Burglary	Larceny	Motor Vehicle Theft	Total	Burglary	Larceny	Motor Vehicle Theft	Total
2011	30,157	142,244	8,707	181,108	372.1	1,755.1	107.4	2,234.7
2012	28,564	138,832	8,072	175,468	348.9	1,696.0	98.6	2,143.5
2013	26,116	134,686	7,660	168,462	316.2	1,630.5	92.7	2,039.4
2014	22,423	130,009	6,801	159,233	269.3	1,561.4	81.7	1,912.4
2015	20,868	127,452	7,300	155,620	248.9	1,520.4	87.1	1,856.4
2016	19,724	126,490	8,691	154,905	234.5	1,503.7	103.3	1,841.5
2017	18,365	124,081	8,969	151,415	216.8	1,464.9	105.9	1,787.7
2018	14,906	115,974	9,518	140,398	175.0	1,361.6	111.7	1,648.3
2019	13,749	116,709	9,034	139,492	161.1	1,367.3	105.8	1,634.3
2020	11,188	103,570	9,734	124,492	130.3	1,206.1	113.4	1,449.8
10-yr % change	-63%	-27%	+12%	-31%	-65%	-31%	+6%	-35%
1-yr % change	-19%	-11%	+8%	-11%	-19%	-12%	+7%	-11%

1-yr = 2019 to 2020

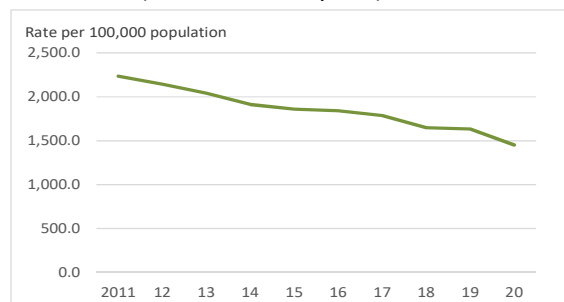
The total property crime *rate* decreased by 35% over the decade, with 2,234.7 property crimes per 100,000 total population reported in 2011, and 1,449.8 property crimes reported in 2020.

Number and rate of total property index crime

1991–2020 (30 years)

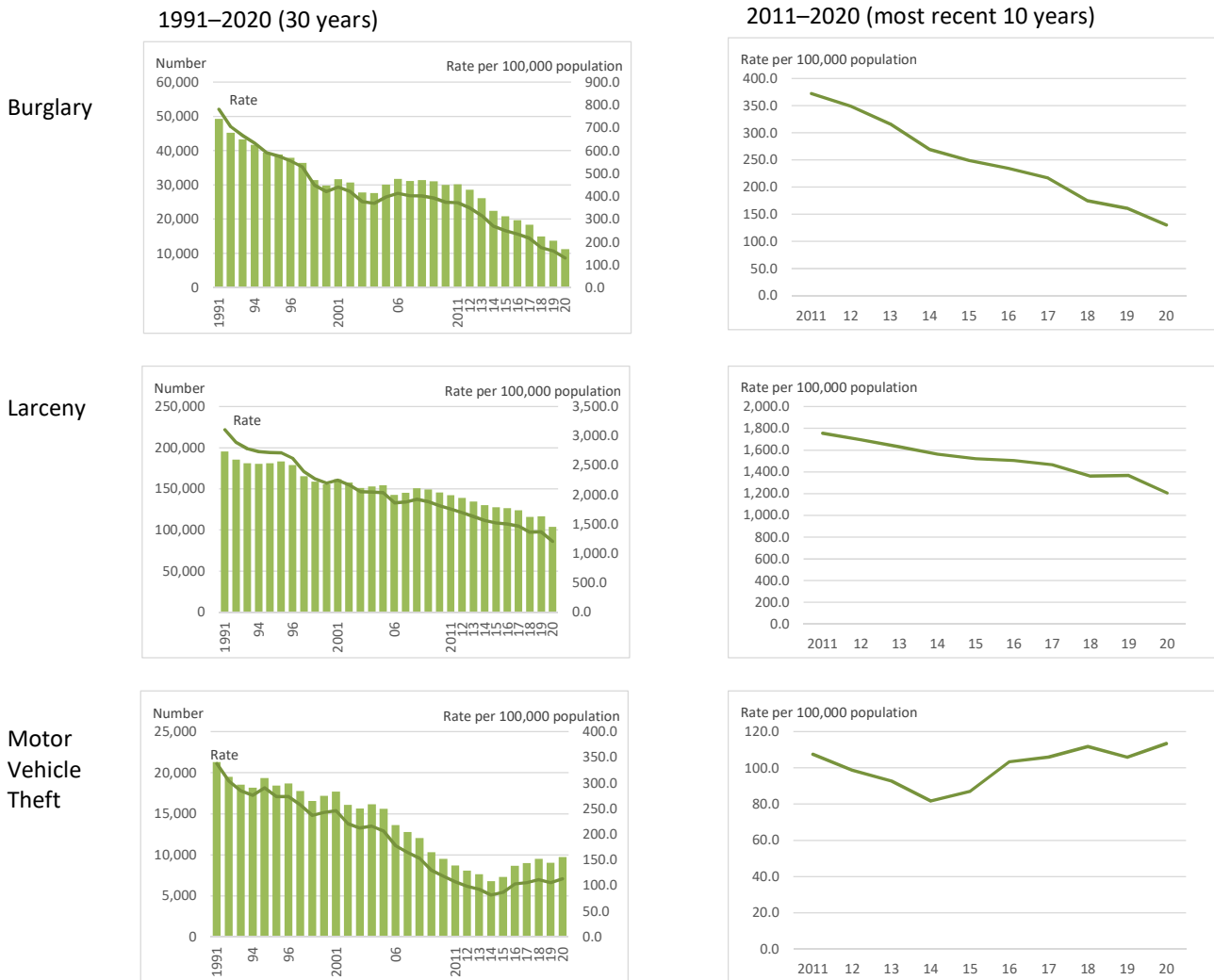


2011–2020 (most recent 10 years)



Virginia’s total property index crime rate decreased continuously from 2012 through 2020. The decade high rate occurred in 2011, with 2,234.7 property crimes reported per 100,000 population. The decade low rate occurred in 2020, when 1,449.8 property crimes were reported per 100,000 population. The 2020 property crime rate was the lowest since 1991. The decline in the total property crime rate flattened from 2018 to 2019 as a result of a slight increase in the larceny rate from 2018 to 2019.

Number and rate of property index crime by crime type



Burglary

The burglary rate statewide decreased by 65%, from a 2011 rate of 372.1 burglaries per 100,000 population to 130.3 burglaries per 100,000 population in 2020. Burglary rates decreased continuously over the decade. From 2019 to 2020 the rate decreased by 19%, down from 161.1 burglaries per 100,000 population reported in 2019 to 130.3 in 2020.

Larceny

Larcenies occur at rates about seven times higher than burglaries and fifteen times higher than motor vehicle thefts. The larceny rate across Virginia decreased by 31% from 2011 to 2020 and decreased by 12% from 2019 to 2020.

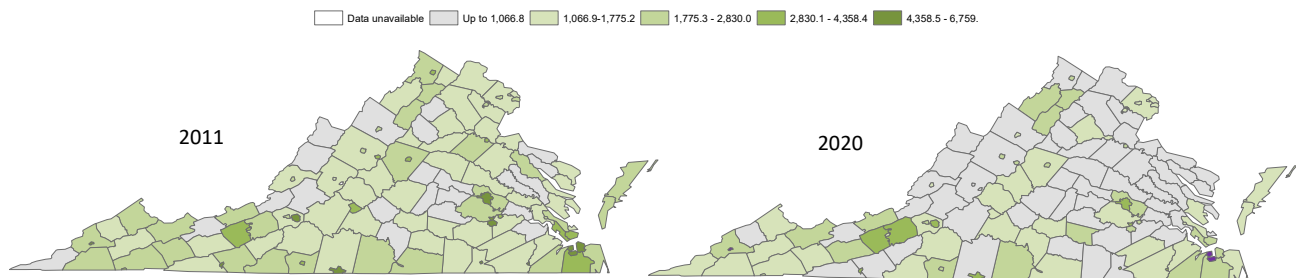
Motor Vehicle Theft

The motor vehicle theft (MVT) rate increased by 6% from 2011 to 2020. MVT was the only property index crime that increased in number and rate over the decade. The MVT trend was mixed after decreasing continuously from 2012 through 2014. The motor vehicle theft rate then increased by 7% from 2019 to 2020, from 105.8 per 100,000 population in 2019 to 113.4 in 2020.

Property Index Crime Rates by Area

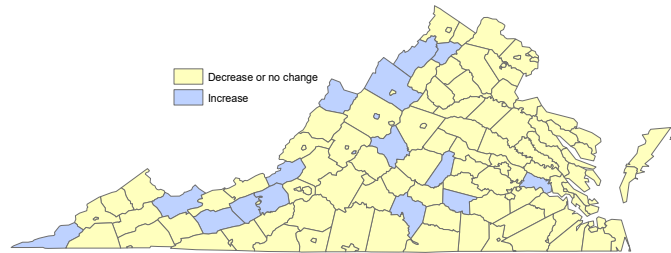
In 2011, total property crime rates in Virginia localities ranged from a low of 247.9 property crimes per 100,000 population to a high rate of 6,759.1 property crimes per 100,000 population. 2020 locality property crime rates ranged from a low rate of 249.9 property crimes per 100,000 population to a high rate of 5,570.9 property crimes per 100,000 population. In 2011, 19 of the 20 localities with the highest property index crime rates were cities. In 2020, 15 cities and five counties were the 20 localities with the highest property crime rates. The reduction in property crime rates is shown in the maps below where many localities with dark shading (indicating higher rates) in the 2011 map are shaded noticeably lighter in the 2020 map.

Total property index crime rate per 100,000 population, by locality and year



While the maps above show locality property index crime rates in 2020 relative to rates in 2011, a locality with no change in shading could still have an increase or decrease in property crime rate.

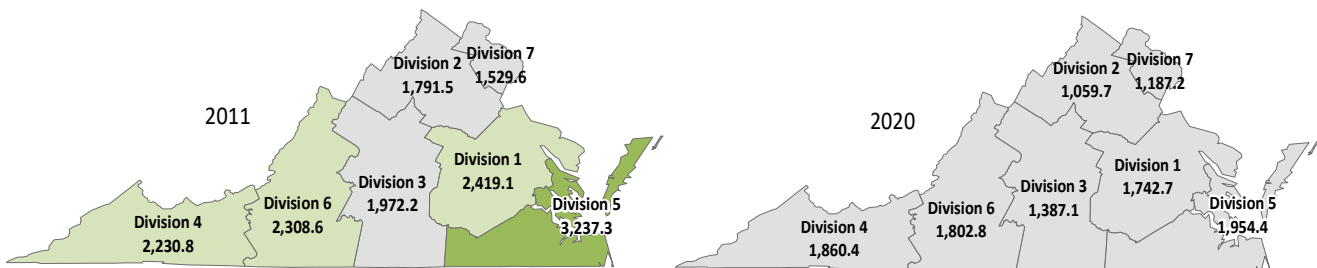
Change in total property index crime rate, 2011–2020



Total property crime rates decreased in 36 of Virginia’s 38 cities and in 80 of Virginia’s 95 counties over the 10-year period.

Property crime rates decreased in all Virginia State Police divisions from 2011 to 2020.

Total property index crime rate by State Police division and year, 2011 and 2020



Total property index crime rate per 100,000 population by locality

Note: 2011 crime and arrest data was unavailable for the city of Buena Vista.

	2011	2020
VIRGINIA	2,234.3	1,449.1

COUNTIES	2011	2020
Accomack Co	2,030.5	1,718.3
Albemarle Co	1,919.5	1,286.5
Alleghany Co	1,604.9	871.2
Amelia Co	1,012.6	952.8
Amherst Co	1,715.6	1,163.3
Appomattox Co	846.4	477.1
Arlington Co	1,728.7	1,308.9
Augusta Co	1,098.2	1,026.6
Bath Co	811.6	437.0
Bedford Co	1,204.8	697.0
Bland Co	764.7	753.3
Botetourt Co	869.0	678.7
Brunswick Co	1,178.0	708.0
Buchanan Co	2,198.8	1,647.2
Buckingham Co	1,392.0	914.7
Campbell Co	1,698.1	1,599.1
Caroline Co	1,772.8	838.1
Carroll Co	2,027.1	1,018.7
Charles City Co	248.4	498.5
Charlotte Co	974.9	1,372.8
Chesterfield Co	2,083.1	1,396.8
Clarke Co	1,321.7	976.7
Craig Co	247.9	833.0
Culpeper Co	1,545.1	1,289.5
Cumberland Co	350.5	446.5
Dickenson Co	1,502.9	812.3
Dinwiddie Co	1,532.4	879.5
Essex Co	1,828.9	948.1
Fairfax Co	1,426.8	1,271.6
Fauquier Co	1,395.8	694.4
Floyd Co	1,195.0	397.8
Fluvanna Co	815.1	390.7
Franklin Co	1,531.0	1,403.7
Frederick Co	2,010.4	1,013.8
Giles Co	1,905.3	1,787.5
Gloucester Co	1,406.8	1,268.1
Goochland Co	991.7	773.6
Grayson Co	1,151.1	1,050.2
Greene Co	1,378.0	962.6
Greensville Co	1,405.1	571.7
Halifax Co	2,431.8	1,890.2
Hanover Co	1,329.9	910.8
Henrico Co	2,467.1	2,079.0
Henry Co	2,830.0	1,799.6
Highland Co	396.1	581.4
Isle of Wight Co	1,740.7	1,242.9
James City Co	1,430.7	815.6
King & Queen Co	924.2	605.0

COUNTIES	2011	2020
King George Co	1,393.3	781.6
King William Co	1,001.2	676.9
Lancaster Co	1,593.5	912.7
Lee Co	881.4	1,482.9
Loudoun Co	1,127.6	765.0
Louisa Co	1,089.8	987.8
Lunenburg Co	1,126.1	476.7
Madison Co	902.9	497.2
Mathews Co	1,251.3	787.1
Mecklenburg Co	2,093.9	1,652.4
Middlesex Co	1,478.6	929.6
Montgomery Co	2,126.4	3,734.6
Nelson Co	1,331.0	1,450.4
New Kent Co	1,319.1	1,023.3
Northampton Co	2,015.4	1,349.6
Northumberland Co	1,177.5	441.2
Nottoway Co	1,645.9	2,290.7
Orange Co	1,108.9	890.5
Page Co	1,941.7	1,791.2
Patrick Co	1,964.4	1,515.5
Pittsylvania Co	1,124.8	679.8
Powhatan Co	850.9	739.7
Prince Edward Co	1,671.3	1,667.1
Prince George Co	1,239.1	1,059.8
Prince William Co	1,685.1	993.8
Pulaski Co	3,536.9	3,630.0
Rappahannock Co	1,015.4	476.3
Richmond Co	522.6	474.9
Roanoke Co	1,609.2	1,539.7
Rockbridge Co	1,230.5	1,001.0
Rockingham Co	772.9	824.5
Russell Co	1,684.5	1,083.2
Scott Co	2,423.4	1,454.4
Shenandoah Co	1,557.0	1,832.9
Smyth Co	2,073.1	1,642.4
Southampton Co	1,563.9	1,185.4
Spotsylvania Co	2,062.7	567.0
Stafford Co	1,474.1	749.0
Surry Co	793.0	483.1
Sussex Co	1,652.9	1,135.6
Tazewell Co	2,447.1	2,800.4
Warren Co	2,130.7	2,284.1
Washington Co	2,407.7	1,720.4
Westmoreland Co	1,066.8	1,020.4
Wise Co	2,198.8	1,898.8
Wythe Co	1,450.4	2,042.2
York Co	1,852.7	1,177.8

COUNTIES	2011	2020
Alexandria C	2,202.4	1,755.9
Bristol C	3,694.5	2,291.0
Buena Vista C	n/a	249.9
Charlottesville C	3,369.3	1,951.0
Chesapeake C	3,177.4	1,781.7
Colonial Heights C	5,328.6	3,714.0
Covington C	2,339.1	1,720.2
Danville C	4,865.4	2,834.3
Emporia C	6,759.1	3,405.0
Fairfax C	2,400.1	1,732.9
Falls Church C	1,775.2	1,503.7
Franklin C	5,561.5	3,523.6
Fredericksburg C	4,358.4	2,800.8
Galax C	5,162.1	3,621.3
Hampton C	3,940.8	2,478.9
Harrisonburg C	2,137.6	1,522.4
Hopewell C	4,232.0	2,029.1
Lexington C	1,491.2	810.6
Lynchburg C	3,235.8	1,651.5
Manassas C	2,115.1	1,614.9
Manassas Park C	1,106.9	711.0
Martinsville C	3,611.3	2,719.5
Newport News C	3,409.9	2,060.7
Norfolk C	5,182.6	2,794.0
Norton C	5,853.2	5,570.9
Petersburg C	4,875.4	2,703.1
Poquoson C	1,136.3	758.8
Portsmouth C	5,459.2	4,475.6
Radford C	3,261.7	1,254.5
Richmond C	4,524.0	3,092.2
Roanoke C	4,795.6	3,825.0
Salem C	2,586.3	1,894.2
Staunton C	2,155.5	2,187.4
Suffolk C	2,805.5	1,819.8
Virginia Beach C	2,739.5	1,510.8
Waynesboro C	3,651.5	2,106.3
Williamsburg C	2,786.1	1,520.4
Winchester C	4,215.2	2,115.5

County and city ranking of total property index crime rate per 100,000 population, by year

Note: 2011 crime and arrest data was unavailable for the city of Buena Vista.

Counties are ranked against other counties (highest rate ranked 1, lowest rate ranked 95)

Cities are ranked against other cities (highest rate ranked 1, lowest rate ranked 37 [2011] or 38 [2020])

COUNTIES	2011	2020	COUNTIES	2011	2020	COUNTIES	2011	2020
Accomack Co	16	15	King George Co	53	68	Alexandria C	30	25
Albemarle Co	22	32	King William Co	77	79	Bristol C	16	15
Alleghany Co	37	61	Lancaster Co	38	57	Buena Vista C	n/a	38
Amelia Co	76	53	Lee Co	82	23	Charlottesville C	20	21
Amherst Co	29	38	Loudoun Co	68	70	Chesapeake C	23	24
Appomattox Co	85	87	Louisa Co	73	50	Colonial Heights C	5	4
Arlington Co	28	30	Lunenburg Co	69	88	Covington C	29	27
Augusta Co	72	43	Madison Co	81	85	Danville C	9	9
Bath Co	87	93	Mathews Co	60	67	Emporia C	1	7
Bedford Co	63	75	Mecklenburg Co	12	17	Fairfax C	28	26
Bland Co	90	71	Middlesex Co	45	55	Falls Church C	34	33
Botetourt Co	83	78	Montgomery Co	11	1	Franklin C	3	6
Brunswick Co	65	74	Nelson Co	56	25	Fredericksburg C	12	10
Buchanan Co	8	18	New Kent Co	59	44	Galax C	7	5
Buckingham Co	54	56	Northampton Co	18	29	Hampton C	15	14
Campbell Co	30	20	Northumberland Co	66	92	Harrisonburg C	32	30
Caroline Co	26	62	Nottoway Co	35	4	Hopewell C	13	20
Carroll Co	17	46	Orange Co	71	59	Lexington C	35	35
Charles City Co	94	84	Page Co	21	12	Lynchburg C	22	28
Charlotte Co	79	28	Patrick Co	20	22	Manassas C	33	29
Chesterfield Co	13	27	Pittsylvania Co	70	77	Manassas Park C	37	37
Clarke Co	58	51	Powhatan Co	84	73	Martinsville C	18	12
Craig Co	95	63	Prince Edward Co	33	16	Newport News C	19	19
Culpeper Co	41	31	Prince George Co	61	41	Norfolk C	6	11
Cumberland Co	93	91	Prince William Co	31	49	Norton C	2	1
Dickenson Co	44	66	Pulaski Co	1	2	Petersburg C	8	13
Dinwiddie Co	42	60	Rappahannock Co	75	89	Poquoson C	36	36
Essex Co	25	54	Richmond Co	91	90	Portsmouth C	4	2
Fairfax Co	49	33	Roanoke Co	36	21	Radford C	21	34
Fauquier Co	52	76	Rockbridge Co	62	48	Richmond C	11	8
Floyd Co	64	94	Rockingham Co	89	64	Roanoke C	10	3
Fluvanna Co	86	95	Russell Co	32	40	Salem C	27	22
Franklin Co	43	26	Scott Co	6	24	Staunton C	31	16
Frederick Co	19	47	Shenandoah Co	40	10	Suffolk C	24	23
Giles Co	23	13	Smyth Co	14	19	Virginia Beach C	26	32
Gloucester Co	50	34	Southampton Co	39	36	Waynesboro C	17	18
Goochland Co	78	69	Spotsylvania Co	15	83	Williamsburg C	25	31
Grayson Co	67	42	Stafford Co	46	72	Winchester C	14	17
Greene Co	55	52	Surry Co	88	86			
Greensville Co	51	82	Sussex Co	34	39			
Halifax Co	5	9	Tazewell Co	4	3			
Hanover Co	57	58	Warren Co	10	5			
Henrico Co	3	6	Washington Co	7	14			
Henry Co	2	11	Westmoreland Co	74	45			
Highland Co	92	81	Wise Co	8	8			
Isle of Wight Co	27	35	Wythe Co	47	7			
James City Co	48	65	York Co	24	37			
King & Queen Co	80	80						

Drug Arrests

The total number of drug arrests³ in Virginia decreased by 24% from 2011 to 2020. Over the decade, the total number of drug arrests statewide averaged over 39,000 annually, with a ten-year low of 27,867 reported in 2020 and a decade-high of 46,752 in 2018. There were over 16,000 fewer drugs arrests in 2020 than in 2019. This decrease was due mostly to the drop in the number of arrests for possession of small amounts of marijuana for personal use, which was decriminalized in Virginia effective July 1, 2020.

Change in number and rate of drug arrests in Virginia, 2011–2020⁴

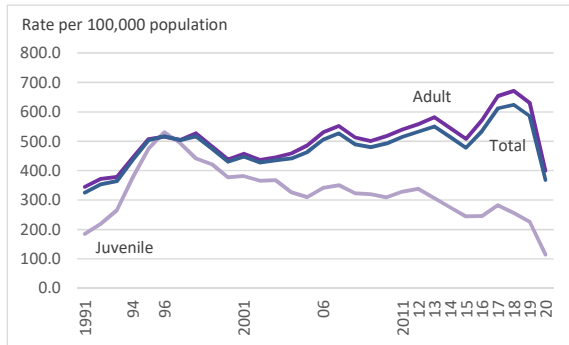
Year	Number of drug arrests			Drug arrest rate		
	Juvenile	Adult	Total	Juvenile	Adult	Total
2011	2,728	33,729	36,457	329.0	540.3	515.5
2012	2,802	35,319	38,121	338.3	558.0	532.6
2013	2,545	37,217	39,762	306.8	581.9	550.3
2014	2,299	35,191	37,490	275.5	545.0	514.2
2015	2,042	33,096	35,138	244.0	508.2	478.1
2016	2,065	37,419	39,484	245.7	572.0	534.9
2017	2,382	43,175	45,557	282.8	654.1	612.1
2018	2,167	44,585	46,752	256.6	670.7	624.0
2019	1,903	42,133	44,036	226.4	631.2	586.0
2020	966	26,901	27,867	114.3	400.1	368.2
10-yr % change	-65%	-20%	-24%	-65%	-26%	-29%
1-yr % change	-49%	-36%	-37%	-50%	-37%	-37%

Rate per 100,000 population (juveniles age 10-17 or adults age 18+)
1-yr=2019 to 2020

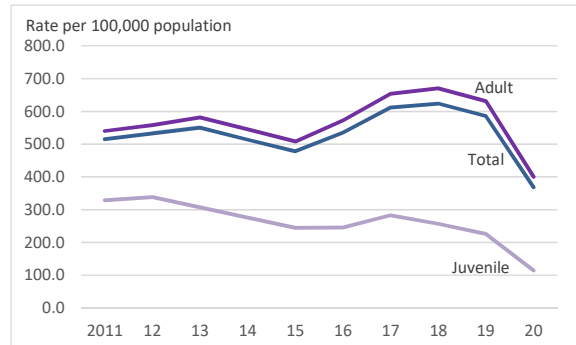
The total drug arrest *rate* decreased by 29% from 2011 to 2020, with 515.5 arrests per 100,000 total arrest age population reported in 2011 and 368.2 reported in 2020. The 10-year trend for drug arrest rates was mixed, with the largest percentage decrease in arrest rates from 2019 to 2020, when the total drug arrest rate decreased by 37%. The drug arrest rate for juveniles decreased by 65% over the ten-year period and the drug arrest rate for adults decreased by 26%.

Total drug arrest rate per 100,000 population age 10 and older by age group

1991–2020 (30 years)



2011–2020 (most recent 10 years)



³ Drug arrests covered here include arrests for possession or sale-manufacture of illicit drugs and exclude arrests for drug equipment violations. Drug arrests are an indicator of police enforcement activity and are not an indicator of drug prevalence.

⁴ This table shows the total number of drug arrests reported statewide whether or not the primary drug type seized was known at the time of arrest.

Arrests by Known Primary Drug Type

Note: In the data used for this report, the primary drug type seized at arrest was unavailable for all drug arrests reported in data files received in November and December 2020. Because of this, primary drug type seized totals for calendar year 2020 that are discussed below were estimated based on the distribution of known primary drug types seized reported in all other data files used to finalize the calendar year 2020 arrest data.

Marijuana (includes Hashish)

From 2011 through 2019, marijuana was the primary drug type seized in 61% of drug arrests (where the drug type was known). After the decriminalization of small amounts of marijuana for personal use in Virginia on July 1, 2020, this ratio for calendar year 2020 dropped to 50% of drug arrests. Over the decade, the number of drug arrests for marijuana decreased by 38%. From 2019 to 2020, the number of marijuana arrests decreased by 47%, from 26,089 arrests in 2019 to 13,899 in 2020.

Stimulants (Cocaine, Crack, Methamphetamine/Amphetamine and other)

This class of drugs had the largest percentage increase in number of arrests compared to the other drug groups. The number of arrests for all stimulants increased by 36%, from 5,083 in 2011 to 6,937 in 2020. The increase in arrests was led by a large increase in arrests for methamphetamine and other amphetamines, from 743 arrests in 2011 to 3,651 in 2020, a 391% increase. At the same time, arrests for crack decreased by 38% while arrests for cocaine decreased by 12%.

After a continuous decline from 2012 to 2014, arrests for all stimulants began to increase in 2015 and increased steadily through 2019. From 2019 to 2020, overall arrests for stimulants decreased by 18%, and arrests decreased for each type of stimulant. Methamphetamine/amphetamine arrests decreased by 9%, from 3,993 arrests in 2019 to 3,651 in 2020, arrests for cocaine decreased by 26%, from 2,726 in 2019 to 2,004 in 2020, and arrests for crack decreased by 25%, from 1,717 in 2019 to 1,282 in 2020.

Opioids (Heroin, Opium, Morphine, and other narcotics both prescription and illicit)

From 2011 to 2020 arrests for all types of opioids increased by 2%, from 2,938 arrests in 2011 to 2,994 arrests in 2020. Arrests for heroin led this increase: there were 926 heroin arrests in 2011 and 1,823 in 2020, a 97% increase. The number of arrests for other narcotics (which include prescription narcotics such as fentanyl as well as illicit fentanyl) decreased by 40%, from 1,812 in 2011 to 1,093 in 2020.

From 2019 to 2020, the total number of arrests for all opioids decreased, from 3,689 in 2019 to 2,994 in 2020, a 19% drop in number. Over this one year period, the number of arrests for heroin decreased by 20% while by the number of arrests for other narcotics (including fentanyl) decreased by 17%.

All Other Drugs (Barbiturates, LSD, PCP, Depressants, Synthetic and “Club” Drugs)

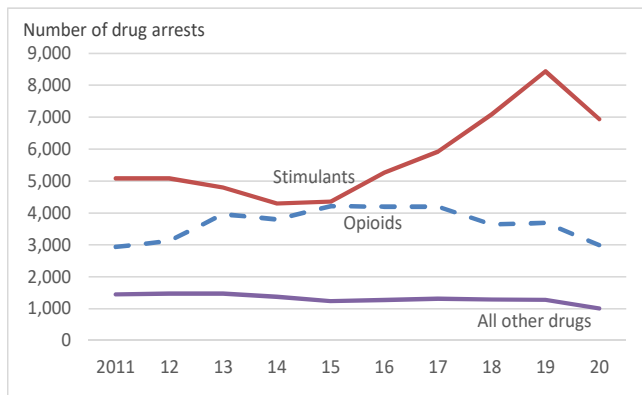
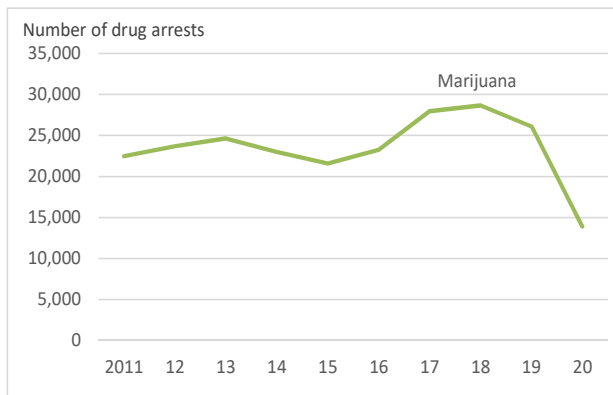
The total number of arrests for barbiturates, hallucinogens, and all other drugs decreased by 30% over the decade, from 1,447 arrests in 2011 to 1,008 in 2020. From 2019 to 2020, arrests for these drugs decreased by 21%.

Number of Virginia drug arrests by primary drug type, 2011–2020

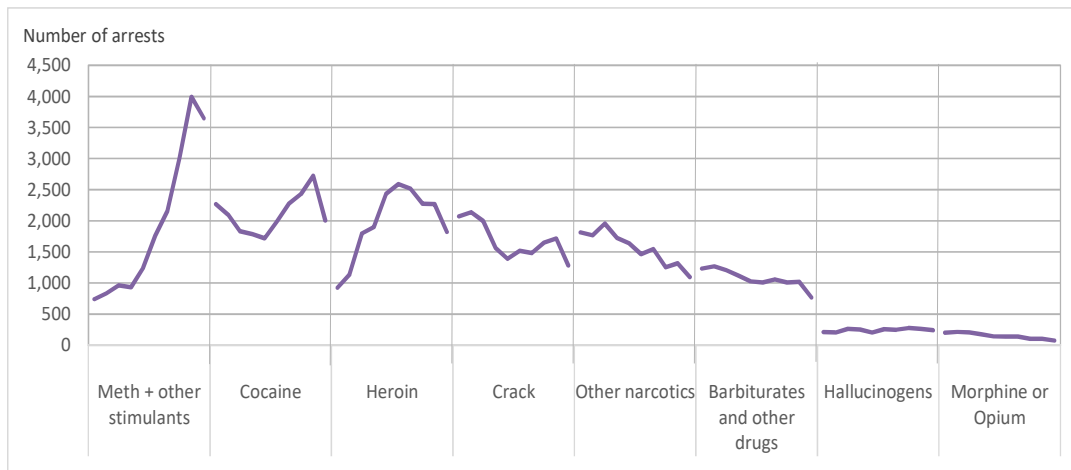
Year	Marijuana	Stimulants				Opioids				All other drugs			Drug type unknown at arrest	Total drug arrests
	and Hashish	Crack	Cocaine	Meth and other	Total	Other narcotics	Heroin	Morphine and opium	Total	Barbiturates and other	Hallucinogens	Total		
2011	22,461	2,072	2,268	743	5,083	1,812	926	200	2,938	1,235	212	1,447	4,528	36,457
2012	23,690	2,141	2,100	838	5,079	1,769	1,139	214	3,122	1,270	206	1,476	4,754	38,121
2013	24,631	1,998	1,832	965	4,795	1,956	1,798	207	3,961	1,207	264	1,471	4,904	39,762
2014	22,985	1,569	1,789	934	4,292	1,729	1,897	176	3,802	1,120	254	1,374	5,037	37,490
2015	21,574	1,391	1,719	1,243	4,353	1,638	2,436	143	4,217	1,030	206	1,236	3,758	35,138
2016	23,252	1,520	1,990	1,762	5,272	1,464	2,592	140	4,196	1,012	259	1,271	5,493	39,484
2017	27,953	1,482	2,277	2,157	5,916	1,544	2,518	137	4,199	1,059	252	1,311	6,178	45,557
2018	28,645	1,648	2,429	3,010	7,087	1,255	2,275	104	3,634	1,011	276	1,287	6,099	46,752
2019	26,089	1,717	2,726	3,993	8,436	1,316	2,270	103	3,689	1,020	263	1,283	4,539	44,036
2020	13,899	1,282	2,004	3,651	6,937	1,093	1,823	78	2,994	767	241	1,008	3,029	27,867
10-yr % change	-38%	-38%	-12%	+391%	+36%	-40%	+97%	-61%	+2%	-38%	+14%	-30%	-33%	-24%
1-yr % change	-47%	-25%	-26%	-9%	-18%	-17%	-20%	-24%	-19%	-25%	-8%	-21%	-33%	-37%

1-yr = 2019 to 2020

Number of drug arrests by primary drug group, 2011–2020



Number of drug arrests by drug type (excluding marijuana), 2011–2020

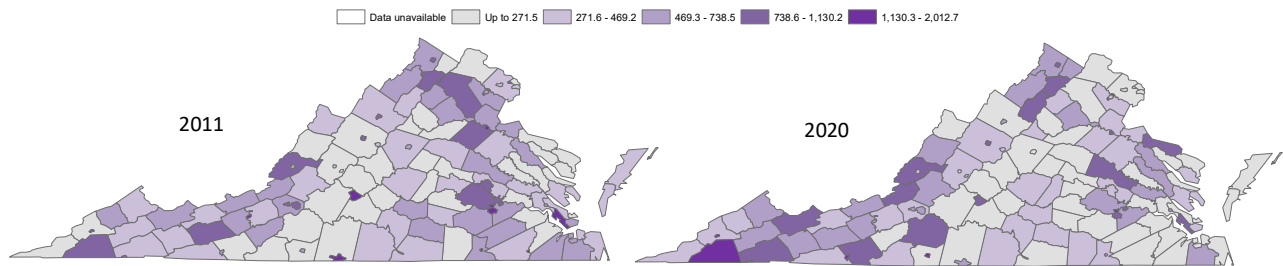


Drug Arrests by Area

The maps below illustrate how drug arrest rates changed from 2011 to 2020 in each Virginia locality and in each State Police division.

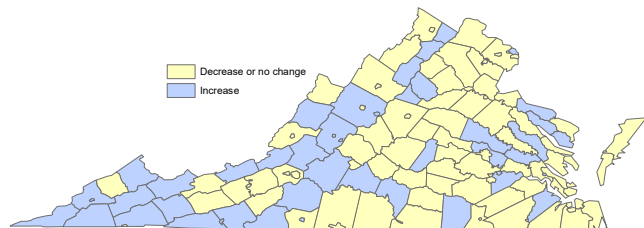
Locality drug arrest rates in 2011 ranged from a low rate of 47.7 arrests to a high rate of 2,012.7 arrests per 100,000 arrest-age population, and in 2020 rates ranged from 23.6 to 2,038.6 arrests per 100,000 population. Note the increase in drug arrests rates along the southwestern corridor of Virginia.

Drug arrest rate per 100,000 population, by locality and year



While the maps above show locality drug arrest rates in 2020 relative to rates in 2011, a locality with no change in shading could still have an increase or decrease in arrest rate.

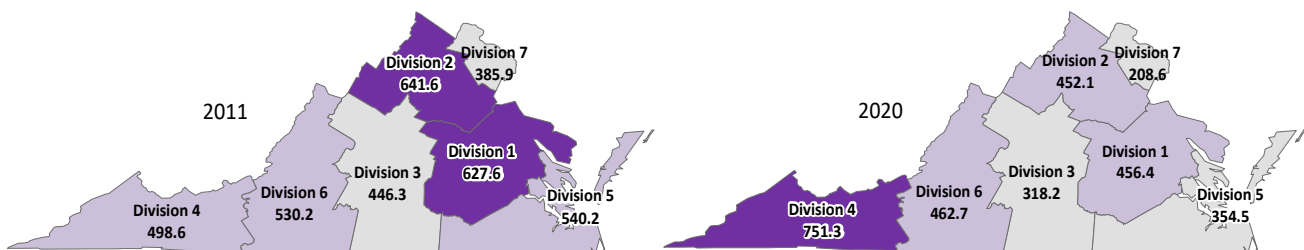
Change in drug arrest rate, 2011–2020



Drug arrest rates increased in 57 out of 95 counties, and in 30 of Virginia’s 38 cities.

Drug arrest rates increased in State Police Division 4, and decreased in all other divisions.

Drug arrest rate by State Police division and year, 2011 and 2020



Drug arrest rate per 100,000 arrest-age population (ages 10 and older) by locality

Note: 2011 crime and arrest data was unavailable for the city of Buena Vista.

	2011	2020
VIRGINIA	515.5	368.2

COUNTIES	2011	2020
Accomack Co	320.3	108.2
Albemarle Co	320.2	141.8
Alleghany Co	846.2	781.4
Amelia Co	220.3	215.5
Amherst Co	260.2	194.2
Appomattox Co	120.0	99.2
Arlington Co	214.1	225.0
Augusta Co	155.2	285.4
Bath Co	255.4	559.9
Bedford Co	142.3	261.8
Bland Co	434.4	346.7
Botetourt Co	441.5	721.4
Brunswick Co	250.6	361.1
Buchanan Co	303.9	579.7
Buckingham Co	355.2	289.7
Campbell Co	104.0	184.8
Caroline Co	431.1	424.3
Carroll Co	253.6	797.5
Charles City Co	105.7	95.2
Charlotte Co	324.0	363.2
Chesterfield Co	752.8	571.7
Clarke Co	196.9	526.3
Craig Co	571.2	771.4
Culpeper Co	559.4	474.0
Cumberland Co	205.1	292.3
Dickenson Co	672.0	426.5
Dinwiddie Co	642.6	23.6
Essex Co	555.7	494.4
Fairfax Co	388.3	200.6
Fauquier Co	943.0	234.3
Floyd Co	550.2	161.6
Fluvanna Co	166.1	141.9
Franklin Co	226.6	776.4
Frederick Co	558.9	487.6
Giles Co	524.8	604.0
Gloucester Co	449.2	418.3
Goochland Co	187.0	75.8
Grayson Co	351.5	396.2
Greene Co	187.0	304.4
Greensville Co	533.3	280.1
Halifax Co	449.9	355.8
Hanover Co	646.3	741.8
Henrico Co	345.1	391.6
Henry Co	181.8	174.4
Highland Co	284.1	49.5
Isle of Wight Co	127.3	247.6
James City Co	290.4	204.6
King & Queen Co	271.5	699.5

COUNTIES	2011	2020
King George Co	524.1	330.5
King William Co	194.0	129.4
Lancaster Co	116.0	296.6
Lee Co	71.2	409.1
Loudoun Co	254.7	119.4
Louisa Co	289.0	217.5
Lunenburg Co	581.1	300.7
Madison Co	145.6	226.8
Mathews Co	352.3	346.3
Mecklenburg Co	327.0	253.5
Middlesex Co	261.1	51.6
Montgomery Co	448.6	406.2
Nelson Co	198.6	96.8
New Kent Co	406.1	528.0
Northampton Co	318.3	133.9
Northumberland Co	228.2	125.2
Nottoway Co	292.0	169.1
Orange Co	227.5	200.9
Page Co	399.8	781.8
Patrick Co	78.2	368.8
Pittsylvania Co	258.2	128.3
Powhatan Co	380.5	154.0
Prince Edward Co	560.3	352.9
Prince George Co	493.6	552.5
Prince William Co	516.6	304.9
Pulaski Co	680.5	660.7
Rappahannock Co	520.2	333.3
Richmond Co	47.7	205.9
Roanoke Co	499.6	440.0
Rockbridge Co	183.3	319.3
Rockingham Co	318.8	231.2
Russell Co	412.8	487.8
Scott Co	820.3	1,977.2
Shenandoah Co	665.8	590.6
Smyth Co	409.6	600.1
Southampton Co	328.7	138.2
Spotsylvania Co	771.1	311.5
Stafford Co	551.1	421.4
Surry Co	160.3	103.3
Sussex Co	738.5	130.0
Tazewell Co	598.0	930.3
Warren Co	776.3	944.4
Washington Co	469.2	844.0
Westmoreland Co	140.3	1,017.7
Wise Co	222.2	373.1
Wythe Co	791.5	712.2
York Co	379.7	181.2

CITIES	2011	2020
Alexandria C	392.5	120.8
Bristol C	1,085.1	989.1
Buena Vista C	n/a	388.6
Charlottesville C	662.0	84.9
Chesapeake C	627.8	490.8
Colonial Heights C	1,917.0	1,513.9
Covington C	661.6	326.1
Danville C	1,468.1	712.4
Emporia C	1,362.8	506.7
Fairfax C	305.6	108.9
Falls Church C	830.3	202.6
Franklin C	1,275.6	612.2
Fredericksburg C	1,319.1	1,006.1
Galax C	683.1	2,038.6
Hampton C	674.7	451.1
Harrisonburg C	814.2	579.6
Hopewell C	820.5	923.9
Lexington C	119.9	176.5
Lynchburg C	1,279.2	826.1
Manassas C	678.2	378.1
Manassas Park C	900.1	594.6
Martinsville C	487.6	1,972.6
Newport News C	1,193.4	979.6
Norfolk C	356.4	235.6
Norton C	1,065.0	1,836.4
Petersburg C	2,012.7	782.1
Poquoson C	268.2	238.2
Portsmouth C	628.4	152.4
Radford C	1,282.5	610.0
Richmond C	963.4	298.9
Roanoke C	1,030.2	515.6
Salem C	780.9	619.5
Staunton C	935.9	803.4
Suffolk C	555.4	241.4
Virginia Beach C	411.8	228.7
Waynesboro C	431.3	463.5
Williamsburg C	650.4	718.1
Winchester C	1,130.2	762.3

County and city ranking of drug arrest rates per 100,000 arrest-age population, by year

Note: 2011 crime and arrest data was unavailable for the city of Buena Vista.

Counties are ranked against other counties (highest rate ranked 1, lowest rate ranked 95)

Cities are ranked against other cities (highest rate ranked 1, lowest rate ranked 37 [2011] or 38 [2020])

COUNTIES	2011	2020	COUNTIES	2011	2020	CITIES	2011	2020
Accomack Co	51	87	King George Co	25	47	Alexandria C	33	36
Albemarle Co	52	79	King William Co	77	83	Bristol C	11	6
Alleghany Co	2	8	Lancaster Co	90	53	Buena Vista C	n/a	25
Amelia Co	72	66	Lee Co	94	34	Charlottesville C	24	38
Amherst Co	62	71	Loudoun Co	65	86	Chesapeake C	28	22
Appomattox Co	89	89	Louisa Co	58	65	Colonial Heights C	2	4
Arlington Co	73	64	Lunenburg Co	15	52	Covington C	25	27
Augusta Co	84	56	Madison Co	85	63	Danville C	3	14
Bath Co	64	21	Mathews Co	45	45	Emporia C	4	21
Bedford Co	86	58	Mecklenburg Co	49	59	Fairfax C	35	37
Bland Co	35	44	Middlesex Co	61	93	Falls Church C	17	33
Botetourt Co	34	12	Montgomery Co	33	35	Franklin C	8	16
Brunswick Co	67	41	Nelson Co	75	90	Fredericksburg C	5	5
Buchanan Co	55	19	New Kent Co	39	23	Galax C	21	1
Buckingham Co	44	55	Northampton Co	54	81	Hampton C	23	24
Campbell Co	92	72	Northumberland Co	68	85	Harrisonburg C	19	19
Caroline Co	36	31	Nottoway Co	56	75	Hopewell C	18	8
Carroll Co	66	6	Orange Co	69	69	Lexington C	37	34
Charles City Co	91	91	Page Co	40	7	Lynchburg C	7	9
Charlotte Co	50	40	Patrick Co	93	39	Manassas C	22	26
Chesterfield Co	7	20	Pittsylvania Co	63	84	Manassas Park C	16	18
Clarke Co	76	24	Powhatan Co	42	77	Martinsville C	30	2
Craig Co	16	10	Prince Edward Co	17	43	Newport News C	9	7
Culpeper Co	18	28	Prince George Co	29	22	Norfolk C	34	31
Cumberland Co	74	54	Prince William Co	27	50	Norton C	12	3
Dickenson Co	10	30	Pulaski Co	9	15	Petersburg C	1	11
Dinwiddie Co	13	95	Rappahannock Co	26	46	Poquoson C	36	30
Essex Co	20	25	Richmond Co	95	67	Portsmouth C	27	35
Fairfax Co	41	70	Roanoke Co	28	29	Radford C	6	17
Fauquier Co	1	61	Rockbridge Co	80	48	Richmond C	14	28
Floyd Co	22	76	Rockingham Co	53	62	Roanoke C	13	20
Fluvanna Co	82	78	Russell Co	37	26	Salem C	20	15
Franklin Co	70	9	Scott Co	3	1	Staunton C	15	10
Frederick Co	19	27	Shenandoah Co	11	18	Suffolk C	29	29
Giles Co	24	16	Smyth Co	38	17	Virginia Beach C	32	32
Gloucester Co	32	33	Southampton Co	48	80	Waynesboro C	31	23
Goochland Co	78	92	Spotsylvania Co	6	49	Williamsburg C	26	13
Grayson Co	46	36	Stafford Co	21	32	Winchester C	10	12
Greene Co	78	51	Surry Co	83	88			
Greensville Co	23	57	Sussex Co	8	82			
Halifax Co	31	42	Tazewell Co	14	4			
Hanover Co	12	11	Warren Co	5	3			
Henrico Co	47	37	Washington Co	30	5			
Henry Co	81	74	Westmoreland Co	87	2			
Highland Co	59	94	Wise Co	71	38			
Isle of Wight Co	88	60	Wythe Co	4	13			
James City Co	57	68	York Co	43	73			
King & Queen Co	60	14						

Appendix

Notes on the data used in this report

Data in this report are from crimes and arrests reported by Virginia law enforcement agencies to the Virginia State Police Uniform Crime Reports (UCR) data repository, which publishes an annual *Crime in Virginia* report.

The crime and arrest figures in this report may differ slightly from those in *Crime in Virginia*. For example, the UCR data repository may receive last-minute data updates from the local agencies that are not available to the DCJS Research Center. Additionally, the DCJS Research Center estimated missing crime and arrest counts for the years 2000–2009 because during this time some law enforcement agencies reported incomplete data as they transitioned from summary-based crime and arrest reporting to incident-based reporting. The Research Center also estimated missing crime and arrest counts for 2017 and 2018, as some agencies had missing data due to technical issues at the agency or at the statewide UCR repository. *Crime in Virginia* contains crime and arrest reports to the Virginia State Police with any missing data noted, but does not estimate the missing data.

The following definitions are used for violent index crimes:

- Murder/non-negligent manslaughter is the willful (non-negligent) killing of one human being by another.
- Rape is penetration, no matter how slight, of the vagina or anus with any body part or object, or oral penetration of a sex organ of another person, without the consent of the victim, whether or not force was used. Rape excludes statutory rape. (Note: The UCR redefined rape in 2013 to include victims of additional types of violent sexual assault). Because this is an historical report, the legacy definition of forcible rape is used throughout.
- Robbery is the taking, or attempting to take, anything of value under confrontational circumstances from the control, custody or care of another person by force or threat of force or violence and/or by putting the victim in fear of immediate harm.
- Aggravated assault is an unlawful attack by one person upon another where the offender uses a weapon or displays it in a threatening manner, or the victim suffers obvious severe or aggravated bodily injury involving apparent broken bones, loss of teeth, possible internal injury, severe laceration, or loss of consciousness. This includes assault with disease.

The following definitions are used for property index crimes:

- Burglary is the unlawful entry into a building or other structure with the intent to commit a felony or a theft.
- Larceny is the unlawful taking, carrying, leading or riding away of property from the possession, or constructive possession, or another person.
- Motor vehicle theft is the theft of a self-propelled vehicle that runs on the surface of land and not on rails. It includes automobiles, buses, recreational vehicles, trucks, and other motor vehicles, e.g., motorcycles, trail bikes, golf carts, snowmobiles, and mopeds.

Crime rates used in this report are the number of crimes reported per 100,000 total (all ages) population. Crime rates are used to allow for comparisons between localities with different population sizes.

Arrest rates used in this report are the number of arrests reported per 100,000 total *arrest-age* population. The arrest age population is individuals ages 10 and older. Juvenile arrest rates are calculated per the juvenile population ages 10 to 17, and adult arrest rates are calculated per the adult population ages 18 and older. U.S. Census Bureau population estimates were used to calculate all rates. For clarity, all crime and arrest *counts* are shown as whole numbers, and all crime and arrest *rates* are shown as decimal numbers.

In this report, crimes and arrests reported by towns are included with those reported by the surrounding county. The city of Bedford became a town effective July 1, 2013. For consistency, the crimes and arrests reported by the former city of Bedford are included in the totals for Bedford County for each year 2011 through 2020.

Calendar year 2011 crime and arrest data was unavailable for the city of Buena Vista.

In the data used for this report, the primary drug type seized at arrest was unavailable for all drug arrests reported in data files received in November and December 2020. Because of this, primary drug type seized totals for calendar year 2020 that are discussed in this report were estimated based on the distribution of known primary drug types seized reported in all other data files used to finalize the calendar year 2020 arrest data.