

REAL-TIME CRIME CENTERS



NEWPORT NEWS POLICE DEPARTMENT

SERGEANT R. THWEATT

MPO / DETECTIVE R. HENLEY

SERGEANT R. THWEATT

- Over 29 years in law enforcement.
- 3 years as a Motor Officer.
- 10 years as a detective spanning General Investigations, Robbery, Special Victims, and Homicide.
- 7 years with the Training Unit.
- Member of TOU (Breacher).
- 4 years as a Sergeant.

MPO / DETECTIVE R. HENLEY

- 17 years with the Newport News Police Department.
- 6 years in Patrol with the last 3 years as a Field Training Officer.
- 3 years in Central Investigations – Property Crimes.
- 3 years on a USPIS Federal Task Force for financial crimes.
- 5 years in the Real-Time Crime Center.
- Asset Forfeiture Coordinator for NNPD.

OBJECTIVES

- Introduction to Real Time Crime Centers.
- Considerations for a Real Time Crime Center.
- Partnerships within the community.
- Brief history of NNPD and it's Real Time Crime Center.
- Brief overview of some of the technologies NNPD utilizes.
- Success stories attributed to the NNPD Real Time Crime Center.

33RD STREET / ROANOKE AVENUE - VIDEO

- Show video.

WHAT IS A REAL-TIME CRIME CENTER?

- Collection point of technology and electronic assets for an agency.
- Uses technology to assist in real time operations for public safety.
- Provides assistance with criminal investigations.
- Enhancing safety and awareness for officers in real-time.

BUDGET CONSIDERATIONS

- Upfront costs of cameras and networking.
- Computers capable of running multiple programs and browsers at once.
- Installation of desired technology.
- Recurring costs (contracts, software licenses).
- Maintenance of the equipment in the field.
- SIM cards if utilizing cellular data.
- Lifts/bucket truck if work is to be done “in house.”

PROACTIVE, REACTIVE, OR BOTH

- Proactive
- Reactive
- Combination of both proactive and reactive is ideal...provided you have the manpower and expertise.

MONITOR-MERRIMAC OVERLOOK PARK - VIDEO

- [Show video](#)

STAFFING

- Overall size of the unit
- Sworn personnel
- Non-Sworn personnel
- Supervision
- Desired operational coverage

VIDEO MANAGEMENT SOFTWARE (VMS)

- A system is needed which provides quick and easy control over the cameras.
- Preferably, this system will accommodate all or most of the available cameras where PTZ control is required.
- If multiple different systems and software is needed to access all possible cameras, prioritize those needed most often.
- A method of retention and saving footage is needed; could be in the VMS or through a third party (i.e. Flock/Fusus).

CAMERAS TYPES

- Overt systems: the cameras are noticeable.
- Covert systems: the cameras are hidden from common view.
- Mixture of both are likely most beneficial.
- Fixed Lens
- Pan-Tile-Zoom (PTZ)
- Multisensor Camera
- Trail Cameras

AQUEDUCT
APARTMENTS
VIDEO



EVIDENCE / VIDEO RECORDINGS

- Control over who has access to download/export videos.
- Ensure what you download/export contains all you need.
- Chain of custody.

COURT AND TESTIMONY

- Overall experience
- Methodology/Process of the investigation.
- Accuracy of the video date/time.
- Custodian of Record for any surveillance videos.

WHO WILL HAVE ACCESS?

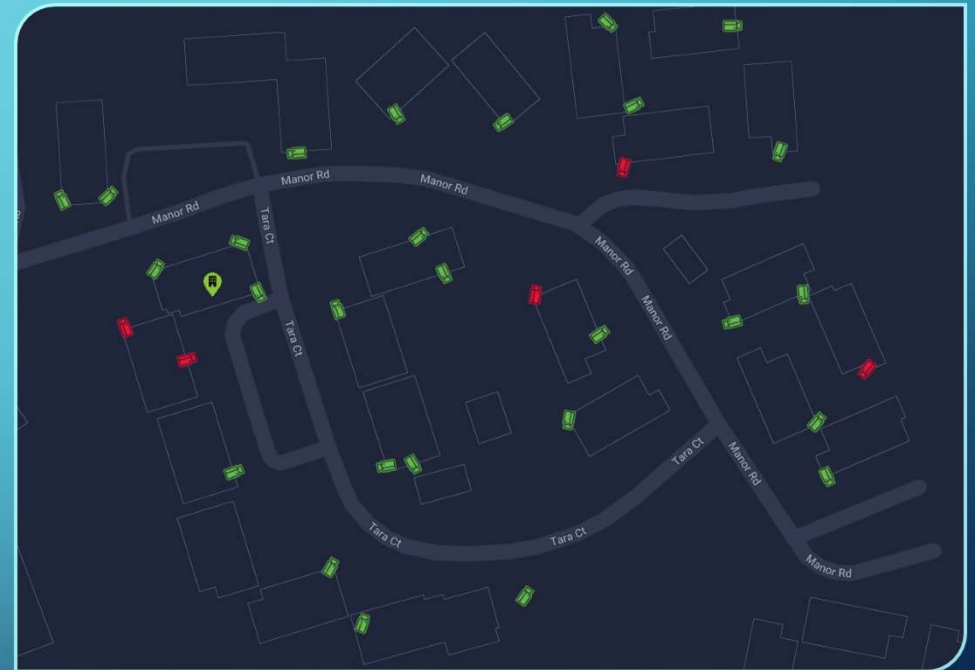
- Assets available to only those in the RTCC?
- Some assets made available to all members of the agency.
- Split up permissions based on place or role within the agency.

PARTNERSHIPS

- Partnerships are vital to making a RTCC the most it can be.
- Partnerships can be other city departments willing to cooperate (traffic engineering, public works, etc.)
- They can also be third party entities (apartment complexes, businesses, etc.)
- Reach out and have an open and working relationship with these outer agency entities and find reasons to partner that benefit your department as well as those other entities.

THE GROVE APARTMENTS

- History of criminal activity on the property.
- No surveillance on the property.
- Management decided to install a camera system.
- They met with NNPd numerous times to ensure sharing was possible.
- Now there are 32 cameras on their property.
- Integrated with Fusus so officers in patrol have access.



THE GROVE
APARTMENTS
VIDEO



COMMUNITY RELATIONSHIPS

- Support is needed from the community.
- From the bottom all the way to the top.
- Transparency of the RTCC.
- Engagement with the community.

POLICIES AND PROCEDURES

- What can / cannot be viewed using a camera.
- Who is allowed access to certain assets.
- Adequate training.
- Procedures to request assets specific to a problem.
- Forms for partnerships related to camera sharing.
- Law enforcement, public safety, or for the wellness of the city/county.

STATISTICS

- Statistics help justify certain technologies and/or locations.
- New laws/rules governing LPR data.
- Other metrics can easily show the effectiveness of the unit.
 - Arrests / Assisting arrests
 - Stolen vehicles recovered
 - Firearms seized
 - Narcotics seized
 - Money seized
 - From a reactive standpoint, investigative assistance.

700 BLOCK OF
35TH STREET
PART 1 VIDEO



700 BLOCK OF
36TH STREET
PART 2 VIDEO

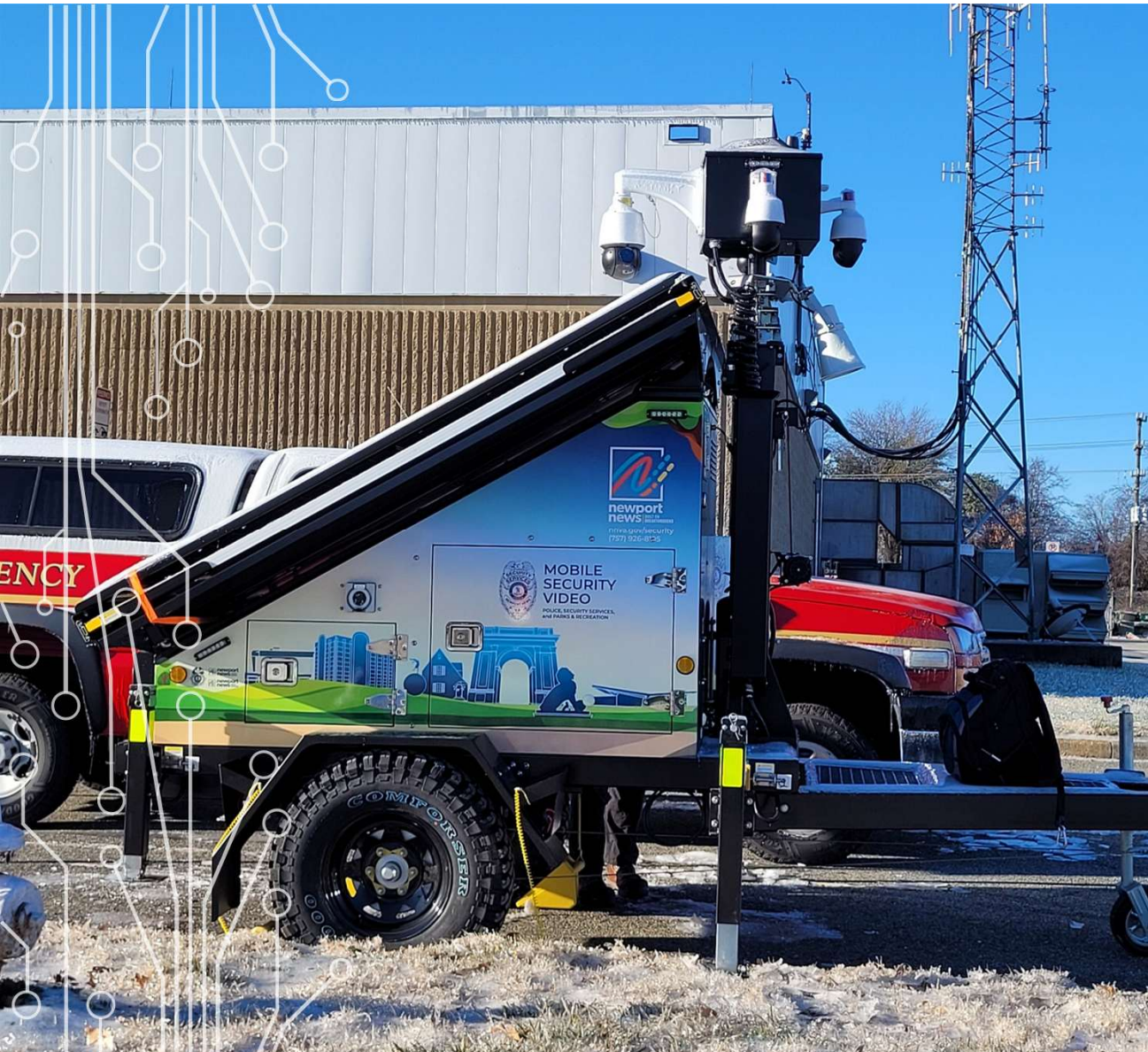


NEWPORT NEWS POLICE DEPARTMENT

- The first cameras were installed around Newport News, mostly in the South Precinct, back in the mid-2000s roughly.
- Camera numbers grew through the years and most were setup with a mesh network.
- One full time sworn camera operator assigned to the camera room.
- Multiple other sworn personnel were trained on the systems and would work part-time for overtime hours.

NEWPORT NEWS POLICE DEPARTMENT - RTCC

- RTCC is now in the old Intelligence office and completely remodeled.
- Large video wall covering the front wall for screen relays.
- Eight workstations for sworn/non-sworn personnel.
- Crime Analyst desk.
- Sergeant desk.
- Lieutenant desk.
- Various technologies to include Fusus, Flock, Genetec, Shotspotter, Axon, Clear.



SURVEILLANCE TRAILER

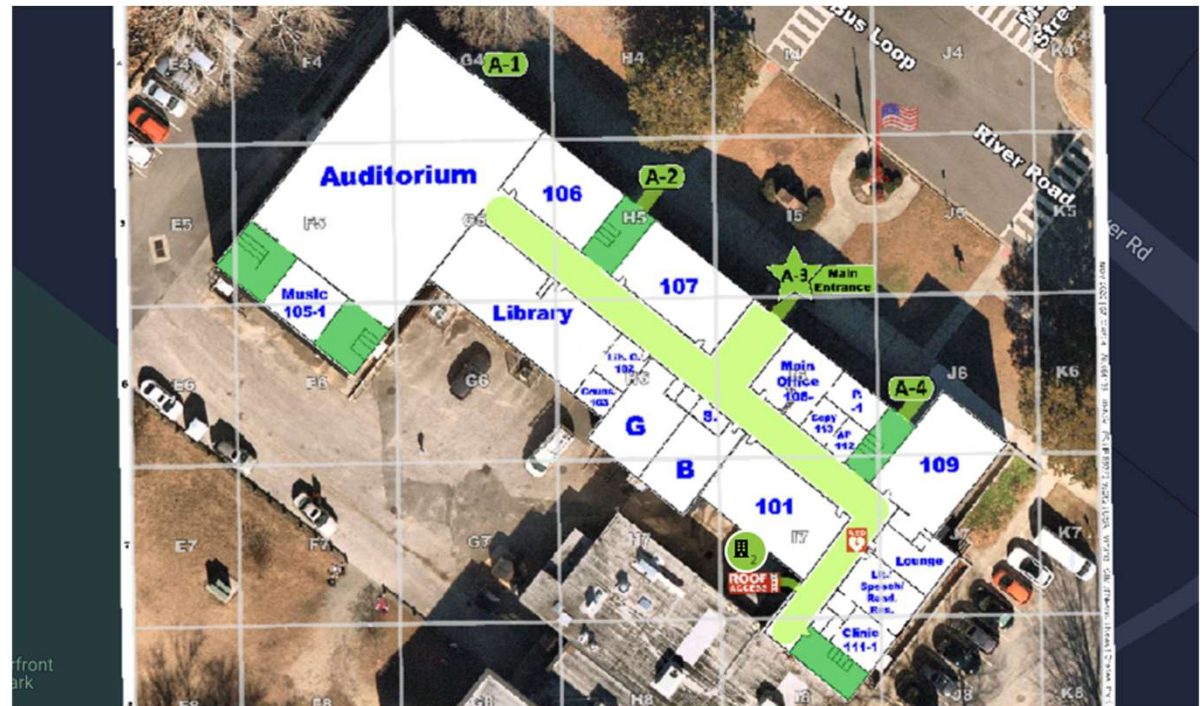
- Mobile surveillance trailer for city events.
- Gas, shore power, and solar power.
- Expandable mast pole with 4 PTZ cameras and 1 fixed lens camera. Also has a horn and speaker.

FUSUS

- Integration and registration software.
- Core devices.
- Allows access to detectives, patrol officers, and analysts for any assets deemed appropriate.
- Control capabilities are stripped from end users and only personnel in the RTCC are given all access.
- Allows retention for camera systems that otherwise do not have the ability to record video.
- Allows videos to be saved in the “vault” and exported directly to evidence.com.
- Allows citizens and other entities to register assets with NNPD.

FUSUS – FLOOR PLANS

- Import various floor plans for buildings.
- Can include key areas of interest such as gas shut offs, roof access, AED, etc.
- Standardize room numbers, hallway names, and entry points.



FLOCK SAFETY

- Started as just automated license plate reader system.
- Flock installs and maintains all hardware.
- Allows searches across numerous cameras to include partial plates.
- Hotlists generated from the NCIC database.
- Custom hotlists can be created for certain offenses.
- Newport News currently has 89 installed.
- Flock Safety has expanded into camera systems, drones as first responders, data analyst platforms, operating systems, VMS, audio detection, etc.

SHOTSPOTTER

- Gunshot detection system.
- Acoustic sensors are able to triangulate the location.
- Data is relayed where a live analyst audits and confirms to police.
- Dispatch has the call for service and patrol officers respond.
- Increases reporting for gunfire.
- Decreased response times.
- Evidence collection.
- Newport News has this system in portions of South and North.

SUCCESS STORIES

- “No body” homicide
- Parental abduction
- Shooting on Logan Place
- Numerous fugitives located within hours
- Domestic related abduction/robbery in the AM and both suspects in custody as soon as they came back to NN in the afternoon from a neighboring jurisdiction

CONCLUSION / CONTACT INFORMATION

- Feel free to contact the Real Time Crime Center with NNPD if you have any questions or need assistance. Our unit email address is rtcc@nnva.gov.
- Sergeant R. Thweatt
 - thweattrn@nnva.gov
 - 757-570-8945
- MPO / Detective R. Henley
 - henleyrc@nnva.gov
 - 757-525-6718